

EX1030KPT



LCD Display Panel



• True double-conversion online UPS

A true double conversion UPS will provide clean, high level quality power to fully protect mission-critical devices such as sensitive networks, small computer centers, servers, telecom applications, as well as for industrial applications.

• Output power factor 0.8

Compared to the online UPSs in the current market, Galleon series provides better output power factor up to 0.8. It offers higher performance and efficiency for critical applications.

• Wide input voltage range (110 V -300 V)

Galleon can still provide stable power to connected devices under unstable power environments.

• Programmable power management outlets

With programmable power management outlets, users can easily and independently control load segments. During power failure, this feature enables users to extend battery time to mission-critical devices by shutting down the non-critical devices.

Programmable Outlets (P1)
- connect to non-critical devices



• 50/60 Hz Frequency Converter Mode

Lock output frequency at 50Hz or 60Hz to suit power sensitive equipments.

• ECO mode operation for energy saving

Offers efficiency as high as 97% to cut energy usage & cost. UPS power application via static bypass, timely returning to online double conversion when the need arises.

• Emergency Power Off (EPO) Function

This feature can secure the personnel and equipment in case of fires or other emergencies.

• SNMP+USB+RS-232 multiple communications for 1-3K models

This feature allows either USB or RS-232 communication port to work with SNMP interface simultaneously.

• DSP technology applied for 6K and up models

A DSP controller provides an improved and cost-effective

• Smart battery charger design to optimize battery performance

- Galleon 1-3K series is equipped with **2-stage charger design** to guarantee battery discharge time. Besides, it will adjust charging voltage according to outside temperature. This features will extend the useful service life of batteries.
- Galleon 6K and up models are equipped with **3-stage extendable charger** for optimized battery performance. This feature extends the useful service life of batteries and optimizes battery recharge time. Besides, the extendable charger design can be stacked in numbers for large-capacity battery charging.

• Maintenance bypass available for 6K and up models

Internal bypass assures continuous power to critical devices during UPS maintenance.

• Optional hot standby mode and N+X parallel redundancy available for 6K and up models

For genuinely redundant power protection, Galleon (6K and up models) can either be used in parallel operation with up to 3 units or hot standby mode. Slave UPS will back up the load in the event of critical component failure. It increases power safety and availability.

• Adjustable battery numbers for 6K and up models

Galleon (6K and up models) can still normal operate well with only 18 or 19 internal batteries.

• Built-in isolation transformer (Option)

With built-in isolation transformer, the UPS will offer full isolation and complete common mode noise rejection for connected precious equipment. It become an ideal power source with 100% protection against unexpected AC power problems.



6K/10K(L) 6KL 2K(L)/3K(L) 1K(L)/1.5K(L)

1KVA/1.5KVA/2KVA/3KVA/6KVA/10KVA Online UPS Selection Guide

| MODEL | | 1K (L) | 1.5K (L) | 2K (L) | | 3K (L) | 6K (L) | 10K (L) | |
|--------------------------------------|---------------------------|----------------------------------------------------------------------------------------------------|----------------|----------------|-----------------|----------------|----------------------------------------------------------------|---------------------------------|--|
| PHASE | | Single phase with ground | | | | | | | |
| CAPACITY | | 1000 VA/800 W | 1500 VA/1200 W | 2000 VA/1600 W | 3000 VA/2400 W | 6000 VA/4800 W | 10000 VA/8000 W | | |
| INPUT | | | | | | | | | |
| Nominal Voltage | | 200/208/220/230/240 VAC or 100/110/115/120/127 VAC | | | | | 208/220/230/240 VAC | | |
| Voltage Range | | 110 - 300 VAC ± 5 % or 50 - 150 VAC ± 5 % | | | | | 176-300 VAC @ 100% load 110-300 VAC @ 50% load | | |
| Frequency Range | | 40 Hz ~ 70 Hz | | | | | 46 ~ 54 Hz or 56 ~ 64 Hz | | |
| Power Factor | | ≥ 0.99 @ Nominal Voltage (100% Load) | | | | | ≥ 0.99 @ 100% Load | | |
| OUTPUT | | | | | | | | | |
| Output Voltage | | 200/208/220/230/240 VAC or 100/110/115/120/127 VAC | | | | | 208/220/230/240 VAC | | |
| AC Voltage Regulation (Batt. Mode) | | ± 1 % | | | | | ± 1 % | | |
| Frequency Range (Synchronized Range) | | 47~53 Hz or 57~63 Hz | | | | | 46 ~ 54 Hz or 56 ~ 64 Hz | | |
| Frequency Range (Batt. Mode) | | 50 Hz ± 0.25 Hz or 60Hz ± 0.3 Hz | | | | | 50 Hz ± 0.1 Hz or 60 Hz ± 0.1 Hz | | |
| Current Crest Ratio | | 3:1 | | | | | 3:1 | | |
| Harmonic Distortion | | THD ≤ 2 % THD (Linear Load) THD ≤ 4 % THD (Non-linear Load) | | | | | THD ≤ 3 % THD (Linear Load) THD ≤ 6 % THD (Non-linear Load) | | |
| Transfer Time | AC Mode to Batt. Mode | Zero | | | | | | | |
| | Inverter to Bypass | 4 ms (Typical) | | | | | Zero | | |
| Waveform (Batt. Mode) | | Pure Sinewave | | | | | | | |
| EFFICIENCY | | | | | | | | | |
| AC Mode | | 87% | | 90% | | 89% | | | |
| Battery Mode | | 83% | | 87% | | 88% | | | |
| BATTERY | | | | | | | | | |
| Standard Model | Battery Type | 12 V / 7 Ah | 12 V / 9 Ah | 12 V / 7 Ah | 12 V / 9 Ah | 12 V / 7 Ah | 12 V / 9 Ah | | |
| | Numbers | 3 | 3 | 6 | 6 | 20 | 20 | | |
| | Typical Recharge Time | 4 hours recover to 90% capacity | | | | | 7 hours recover to 90% capacity | 9 hours recover to 90% capacity | |
| | Charging Current (max.) | 1.0 A | | | | | 1.0 A | | |
| | Charging Voltage | 41.0 VDC ± 1% | | | 82.1 VDC ±1% | | 273.0 VDC ±1% | | |
| Long-run Model | Battery Type | Depending on applications | | | | | Depending on applications | | |
| | Numbers | 3 | 3 | 6 | 6 | 18-20 | | | |
| | Charging Current (max.) | 8.0 A | | | | | 4.0 A | | |
| | Charging Voltage | 41.0 VDC ± 1% | | | 82.1 VDC ±1% | | 273.0 VDC ±1% | | |
| INDICATORS | | | | | | | | | |
| LCD Display | | UPS status, Load level, Battery level, Input/Output voltage, Discharge timer, and Fault conditions | | | | | | | |
| ALARM | | | | | | | | | |
| Battery Mode | | Sounding every 4 seconds | | | | | | | |
| Low Battery | | Sounding every second | | | | | | | |
| Overload | | Sounding twice every second | | | | | | | |
| Fault | | Continuously sounding | | | | | | | |
| PHYSICAL | | | | | | | | | |
| Standard Model | Dimension, D x W x H (mm) | 397 x 145 x 220 | | | 421 x 190 x 318 | | 592 x 250 x 576 | | |
| | Net Weight (kgs) | 13 | 14 | 26 | 28 | 81 | 83 | | |
| Long-run Model | Dimension, D x W x H (mm) | 397 x 145 x 220 | | | 421 x 190 x 318 | | 592 x 250 x 576 | | |
| | Net Weight (kgs) | 7 | 7 | 13 | 13 | 25 | 27 | | |
| ENVIRONMENT | | | | | | | | | |
| Humidity | | 20-90 % RH @ 0- 40°C (Non-condensing) | | | | | | | |
| Noise Level | | Less than 50dB@1Meter | | | | | Less than 55dB@1Meter | Less than 58dB@1Meter | |
| MANAGEMENT | | | | | | | | | |
| Smart RS-232 | | Supports Windows® 2000/2003/XP/Vista/2008, Windows® 7/8, Linux, Unix, and MAC | | | | | | | |
| USB | | | | | | | | | |
| Optional SNMP | | Power management from SNMP manager and web browser | | | | | | | |

*Derate to 80% of capacity in Frequency converter mode and to 80% when the output voltage is adjusted to 100VAC, 200VAC or 208 VAC.

** L means long-run model

Tower Battery Pack (Optional built-in charger)

| Capacity (VA) | 1K/1.5K | | 2K/3K | | | |
|----------------------|-----------------|-----------|-----------------|-----------|-----------------|-----------|
| Battery Type | 12 V 7 Ah | 12 V 9 Ah | 12 V 7 Ah | 12 V 9 Ah | 12 V 7 Ah | 12 V 9 Ah |
| Battery Number | 6pcs | 6 pcs | 12 pcs | 12 pcs | 18 pcs | 18 pcs |
| Dimension (DxWxH) mm | 397 X 145 X 220 | | 421 X 190 X 318 | | 535 X 190 X 318 | |
| Net Weight (kgs) | 18 | 20 | 36 | 40 | 55 | 61 |
| | | | | | | |
| Capacity (VA) | 6K/10K | | | | | |
| Battery Type | 12 V 7 Ah | 12 V 9 Ah | 12 V 7 Ah | 12 V 9 Ah | 12 V 7 Ah | 12 V 9 Ah |
| Battery Number | 40 pcs | 40 pcs | 60 pcs | 60 pcs | 80 pcs | 80 pcs |
| Dimension (DxWxH) mm | 592 X 250 X 576 | | 830 X 250 X 576 | | 815 x 250 x 826 | |
| Net Weight (kgs) | 109 | 125 | 166 | 190 | 210 | 242 |

EX110KPRT Rackmount/Rack tower (option)



- True double-conversion
- Wide input voltage range (110-300 VAC)
- Input power factor correction 0.99
- Output power factor 0.8
- 50Hz/60Hz frequency converter mode
- Programmable power management outlets
- Emergency power off function (EPO)
- ECO mode operation for energy saving (ECO)
- SNMP+USB+RS-232 multiple communications
- Smart battery charger design for optimized battery performance
- Selectable output voltage via LCD panel
- Optional isolation transformer offers full isolation and complete common mode noise rejection
- Hot-swappable battery design (only available for 1-3K)

Rackmount/Rack Tower Online UPS Selection Guide

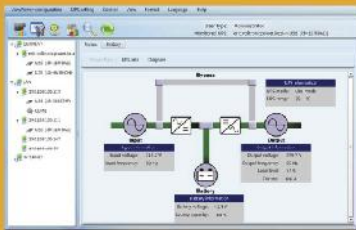
| MODEL | | RM-1K (L) | | RM-1.5K (L) | | RM-2K (L) | | RM-3K (L) | | 6KR (L) | | 10KR (L) | |
|--------------------------------------|---------------------------|----------------------------------------------------------------------------------------------------|---------------------|---------------------|---------------------|---------------------|---------------------|------------------------------------------------------------------------|-----------------------------------------------------------------------|------------------------------------------------------------------|---------|---------------------------------|--|
| PHASE | | Single phase with ground | | | | | | | | | | | |
| CAPACITY | | 1000 VA / 800 W | | 1500 VA / 1200W | | 2000 VA / 1800 W | | 3000 VA / 2400 W | | 6000 VA / 4800 W | | 10000 VA / 8000 VA | |
| INPUT | | | | | | | | | | | | | |
| Nominal Voltage | | 110/115/120/127 VAC or 208/220/230/240VAC | | | | | | | | 208/220/230/240 VAC | | | |
| Voltage Range | | 50 - 150 VAC $\pm 5\%$ or 110 - 300 VAC $\pm 5\%$ | | | | | | | | 176-300 VAC @ 100% load 110-300 VAC @ 50% load | | | |
| Frequency Range | | 45Hz ~ 55 Hz or 58Hz ~ 65 Hz | | | | | | | | 46~54 Hz or 56~64 Hz | | | |
| Power Factor | | ≥ 0.99 @ Nominal Voltage (100% Load) | | | | | | | | ≥ 0.99 @ 100% load | | | |
| OUTPUT | | | | | | | | | | | | | |
| Output Voltage | | 110/115/120/127 VAC or 208/220/230/240 VAC | | | | | | | | 208/220/230/240 VAC | | | |
| AC Voltage Regulation (Batt. Mode) | | $\pm 1\%$ | | | | | | | | $\pm 1\%$ | | | |
| Frequency Range (Synchronized Range) | | 48 ~ 52 Hz or 58 ~ 62 Hz | | | | | | | | 46~54 Hz or 56~64 Hz | | | |
| Frequency Range (Batt. Mode) | | 50 Hz ± 0.2 Hz or 60Hz ± 0.2 Hz | | | | | | | | 50 Hz ± 0.1 Hz or 60 Hz ± 0.1 Hz | | | |
| Current Crest Ratio | | 3:1 | | | | | | | | 3:1 | | | |
| Harmonic Distortion | | $< 2\%$ THD (Linear Load). 8% max. (Batt. mode before shut down) | | | | | | | | $\leq 3\%$ THD (Linear Load) $\leq 6\%$ THD (Non-linear Load) | | | |
| Transfer Time | AC Mode to Batt. Mode | Zero | | | | | | | | | | | |
| | Inverter to Bypass | 4 ms (Typical) | | | | | | | | Zero | | | |
| Waveform (Batt. Mode) | | Pure Sinewave | | | | | | | | | | | |
| EFFICIENCY | | | | | | | | | | | | | |
| AC Mode | | 86% | | | | 88% | | | | 89% | | | |
| Battery Mode | | 83% | | | | 85% | | | | 88% | | | |
| BATTERY | | | | | | | | | | | | | |
| Standard Model | Battery Type | 12V/9Ah | 12V/7Ah | 12V/9Ah | 12V/8Ah | 12V/7Ah | 12V/9Ah | 12V/7Ah | 12V/9Ah | 12V/7Ah | 12V/9Ah | | |
| | Numbers | 2 | 3* | 3 | 4 | 6* | 6 | 20 | 20 | | | | |
| | Typical Recharge Time | 4 hours recover to 90% capacity | | | | | | | | 3 hours recover to 90% capacity | | 4 hours recover to 90% capacity | |
| | Charging Current (max.) | 1.0 A | | | | | | | | 2.0 A | | | |
| | Charging Voltage | 27.4VDC $\pm 1\%$ | 41.1VDC $\pm 1\%$ | 41.1VDC $\pm 1\%$ | 54.8VDC $\pm 1\%$ | 82.1VDC $\pm 1\%$ | 82.1VDC $\pm 1\%$ | 273 VDC $\pm 1\%$ | | | | | |
| Long-run Model | Battery Type | Depending on the capacity of external batteries | | | | | | | | Depending on applications | | | |
| | Numbers | | | | | | | | | 18-20 | | | |
| | Charging Current (max.) | 8.0 A | | | | | | | | 2.0 A | | | |
| | Charging Voltage | 27.4 VDC $\pm 1\%$ | 41.1 VDC $\pm 1\%$ | 41.1 VDC $\pm 1\%$ | 54.8VDC $\pm 1\%$ | 82.1VDC $\pm 1\%$ | 82.1 VDC $\pm 1\%$ | 273.0 VDC $\pm 1\%$ | | | | | |
| INDICATORS | | | | | | | | | | | | | |
| LCD Panel | | UPS status, Load level, Battery level, Input/Output voltage, Discharge timer, and Fault conditions | | | | | | | | | | | |
| ALARM | | | | | | | | | | | | | |
| Battery Mode | | Sounding every 4 seconds | | | | | | | | | | | |
| Low Battery | | Sounding every second | | | | | | | | | | | |
| Overload | | Sounding twice every second | | | | | | | | | | | |
| Fault | | Continuously sounding | | | | | | | | | | | |
| PHYSICAL | | | | | | | | | | | | | |
| Standard Model | Dimension, D x W x H (mm) | 380 x 438 x 88 [2U] | 480 x 438 x 88 [2U] | 480 x 438 x 88 [2U] | 480 x 438 x 88 [2U] | 600 x 438 x 88 [2U] | 600 x 438 x 88 [2U] | UPS Unit : 580 x 438 x 133 [3U] Battery Pack : 580 x 438 x 133 [3U] | UPS Unit: 668 x 438 x 133 [3U] Battery Pack : 580 x 438 x 133 [3U] | | | | |
| | Net Weight (kgs) | 13.2 | 18.4 | 18.5 | 20.6 | 25.7 | 29 | UPS Unit : 17 Battery Pack : 57 | UPS Unit : 20 Battery Pack : 63 | | | | |
| Long-run Model | Dimension, D x W x H (mm) | 380 x 438 x 88 [2U] | 480 x 438 x 88 [2U] | 480 x 438 x 88 [2U] | 480 x 438 x 88 [2U] | 600 x 438 x 88 [2U] | 600 x 438 x 88 [2U] | 580 x 438 x 133 [3U] | 668 x 438 x 133 [3U] | | | | |
| | Net Weight (kgs) | 9.1 | 11.3 | 10.7 | 11.3 | 14.6 | 14.8 | 17 | 20 | | | | |
| ENVIRONMENT | | | | | | | | | | | | | |
| Humidity | | 20-90 % RH @ 0- 40°C (Non-condensing) | | | | | | | | | | | |
| Noise Level | | Less than 50dB @ 1 Meter | | | | | | | | Less than 55dBA @ 1 Meter | | Less than 58dBA @ 1 Meter | |
| MANAGEMENT | | | | | | | | | | | | | |
| Smart RS-232/USB | | Supports Windows® 2000/2003/XP/Vista/2008, Windows® 7/8, Linux, Unix, and MAC | | | | | | | | | | | |
| Optional SNMP | | Power management from SNMP manager and web browser | | | | | | | | | | | |

Rack Battery Pack

| Form Factor | 2U | | | | 3U | |
|----------------------|----------------|-------------|----------------|----------------|-----------------|-------------|
| Capacity (VA) | 1K | 1K / 1.5K | 2K | 2K / 3K | 6K/10K | |
| Battery Type | 12 V / 9 Ah | 12 V / 9 Ah | 12 V / 9 Ah | 12 V / 9 Ah | 12 V / 7 Ah | 12 V / 9 Ah |
| Battery Number | 4 pcs | 6 pcs | 8 pcs | 12 pcs | 20 pcs | 20 pcs |
| Dimension (DxWxH) mm | 380 x 438 x 88 | | 480 x 438 x 88 | 600 x 438 x 88 | 680 X 438 X 131 | |
| Net Weight (kgs) | 16.9 | 21.3 | 28.7 | 40.8 | 57 | 65 |

Software

ViewPower - UPS Management Software



- * Allows control and monitoring of multiple UPSs via LAN and INTERNET
- * User-friendly power analysis graphs
- * Real-time dynamic graphs of UPS data
- * Safely OS shutdown and protection from data loss during power failure
- * Warning notifications via audible alarm, broadcast, mobile messenger, and e-mail
- * Scheduled UPS on/off, battery test, programmable outlet control, and audible alarm control
- * Password security protection and remote access management
- * Supports multiple OS and local languages

Accessory

Remote Control Agent

SNMP Card



- * Allows control and monitoring of multiple UPSs through RJ-45 network connection
- * Real-time dynamic graphs of UPS data (voltage, frequency, load level, battery level)
- * Warning notifications via audible alarm, broadcast, mobile messenger, e-mail and SNMP traps
- * Historic data log stored in centralized PC database
- * Simple firmware upgrade with one click
- * Password security protection and remote access management
- * Supports optional environmental monitoring detector for temperature, humidity and smoke
- * 2-year product warranty

AS-400 Card



9-pin interface



RS-232 interface

- * Capable of selecting the status of the dry-contact signal by setting jumper to meet different application requirements.
- * Suitable applications: IBM Server, Personal PC & Workstations equipments, Auto-controlled industrial equipment & communication applications

Rackmount Slider

Simple installation for mounting Galleon Rack in your server rack enclosure.



PDU & Maintenance Bypass Switch



External Maintenance Bypass Switch

